

BODY
ARMOR  VENT



2024 PRODUCTS CATALOG

I.C.E. Retro Fit Kit

Sizes Available:

X-Small (7x9 Panels)

Small(8x10 Panels)

Medium (9x11 Panels)

Large (10x12 Panels)

X-Large (12x14 Panels)

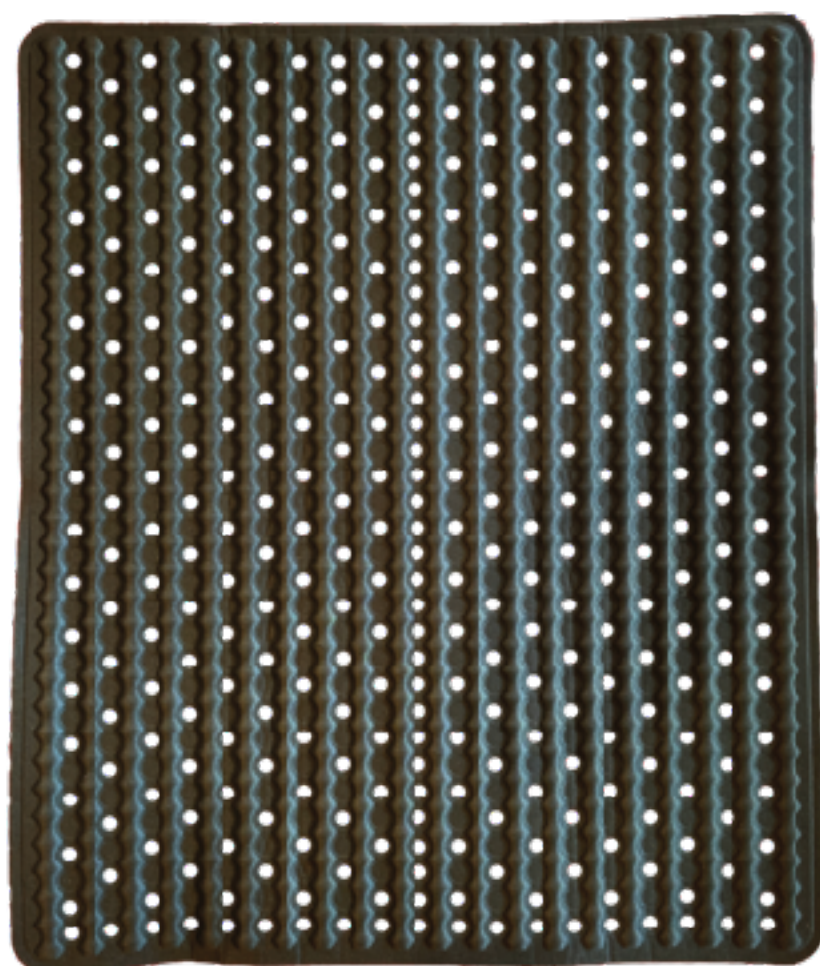
Kit includes 2 panels (front/back) and 72” of adhesive hook tape.

Increases the surface area exposed to evaporative airflow.

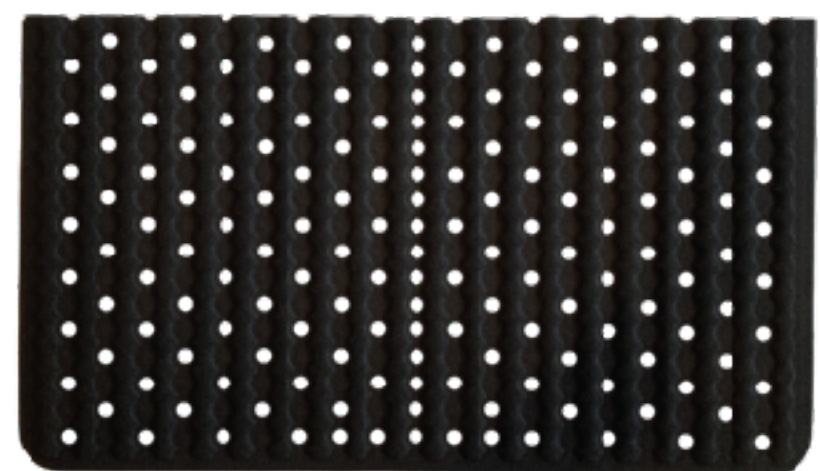
Our technology produces continuous air flow between your torso and your body armor. The channels and holes designed into the panels move air through the backside of the armor. Airflow is created not only by hot air raising, but also your own breathing. Altogether these actions cause cooler air to be drawn in under the body armor.



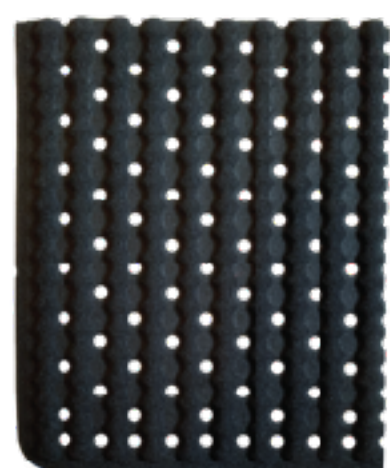
FULL SHEET



HALF SHEET



QUARTER SHEET



HOOK TAPE



B-24 CUSTOM FIT KIT

Sizes Available:

Full Sheet (19.75" x 23.375" Panel)

Half Sheet (19.75" x 11.675" Panel)

Quarter Sheet (11.675" x 9.875" Panel)

Includes one panel and 72" of adhesive hook tape

Available in three sizes, is designed to be a make-your-own Body Armor Vent custom cut to fit your specific tactical gear. The B-24 was created for the elite operator that truly likes to customize their gear for the perfect fit and comfort.



AIWB Holster Wedge Vent

Sizes Available:

- The Alpha Wedge(6" x 1.5")**
- The Fin 4.5" (Left & Right Hand Carry) (4.5" x 2.25")**
- The Fin 6" (Left & Right Hand Carry (6" x 2.75")**
- The Custom (2 Panels @ 4" x 6")**

Kit includes panel, wedges and pre cut adhesive hook tape.

Stay cool. Stay Concealed.

Introducing our new Wedge-Vent System for AIWB concealed carry holsters. The Wedge Vent is fully customizable system to improve the concealment of your firearm and provide air circulation behind your hot, unbreathable Kydex or leather AIWB concealed holster.

The Fin was developed for holsters designed for light bearing firearms. The Alpha Wedge was developed for holsters designed for with or without light bearing firearms.





I.C.E. Retro Fit Backpack Kit

Sizes Available:

- X-Small (7x9 Panel)
- Small(8x10 Panel)
- Medium (9x11 Panel)
- Large (10x12 Panel)
- X-Large (12x14 Panel)

Kit includes 1 panel (back) and 72” of adhesive hook tape.

Increases the surface area of your back exposed to evaporative airflow.

Air flow around and through the panel is driven as the hot air expands and your own breathing provides the air flow which then produces evaporative cooling. Air moving over moisture, just like an AC!



Ten97, Inc.

dba Body Armor Vent

Marisa Williams

marisawilliams707@gmail.com

(707) 486-1705

www.bodyarmorvent.com

